

## The Bill Douglas Cinema Museum LGBT+ Trail

The exhibition '[Queer Cinema in Motion](#)' brings together materials from the archives of the Bill Douglas Cinema Museum which relate to LGBT+ film history. It includes cinema which represents LGBT+ characters, questions normative narratives and films which have been read queerly. This trail draws attention to artefacts currently on display in the museum associated with queer narratives as well as those which have connections to renowned LGBT+ actors and directors. It highlights fifteen example artefacts which can be found in the Upper Galleries of the museum.

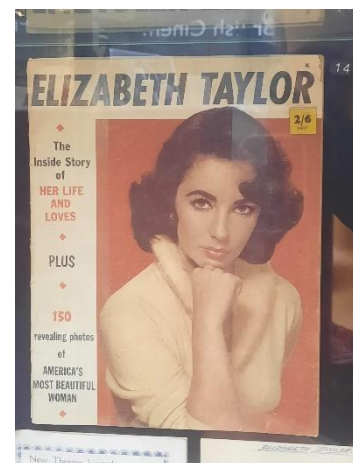
### 1. Greta Garbo bottle stopper

This is one of several objects which feature the Swedish-American actress who was one of the most popular motion-picture stars of the 1920s and 30s. Biographers have often speculated about her sexuality, and she is known to have had intimate relationships with both men and woman.



### 2. Elizabeth Taylor magazine

Taylor was an English-American actress who is remembered as a gay rights ally. She was one of the first celebrities to participate in HIV/AIDS activism



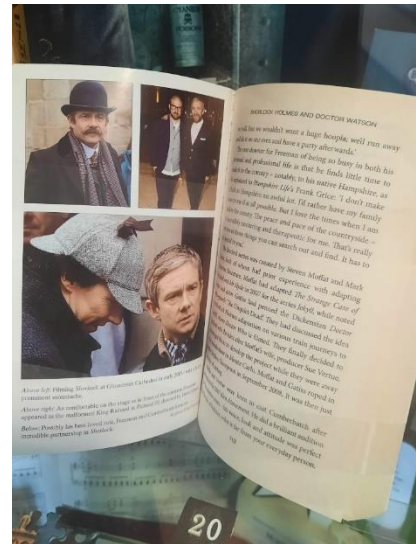
### 3. James Dean pillow

There are a number of items on display which feature the American actor who is considered a cultural icon of teenage disillusionment and social estrangement. The actor was known to have an ambivalent sexuality.



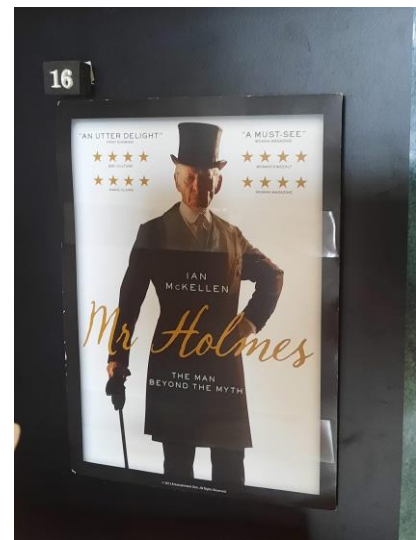
#### 4. Book presenting images from 'Sherlock' (BBC)

The homoerotic subtext and potential representation of asexuality in the BBC'S 'Sherlock' has frequently been discussed. The show has inspired a large amount of queer fan fiction and has also been accused of queer-baiting.



#### 5. Ian McKellen 'Mr Holmes' Poster

McKellen is an iconic gay actor and LGBT rights activist.



#### 6. Goldfinger Poster

In Ian Fleming's original James Bond novel, the character 'Pussy Galore' was described as a lesbian 'cured' by Bond. In the film adaptation homosexuality was not portrayed.



## 7. Shoes worn by Marlene Dietrich

Dietrich was a bisexual actress and singer whose career spanned from the 1910s to the 1980s.



## 8. Poster for 'Mulan'

While based on a real woman the character of Mulan as portrayed by Disney is often seen as a queer icon. The films' portrayal of gender roles has sometimes been criticised or described as a missed opportunity for representation.



## 9. Press book for 'A Taste of Honey'

This 1961 film was adapted from the play by Shelagh Delaney. It openly depicts a gay character and discusses homosexuality.





## 10. William Haines cigarette card

Haines acting career was cut short in the 1930's due to his refusal to deny his homosexuality.



## 11. Postcard of Ivor Novello

Novello was a Welsh composer and actor. In theatrical circles his homosexuality was an open secret, and he was known to have many lovers.



## 12. Deep Blue Sea

This film is an adaptation of the 1952 Terence Rattigan play. The original idea of the play focussed on a male homosexual relationship.



### 13. Rudolph Valentino

Valentino was a sex symbol of the 1920s, known in Hollywood as the 'Latin Lover'. It is often speculated that he had homosexual relationships.



### 14. Charles Laughton Poster

Laughton was an English stage and film actor. He is often thought to have been bisexual or suppressed homosexual.



### 15. Photograph of Derek Jarman at work

Jarman was an English film director and stage designer. He was outspoken about homosexuality, his public fight for gay rights, and his personal struggle with AIDS.

